



AFRICA SOVEREIGN INVESTORS FORUM

5th ASIF ANNUAL MEETING

Luanda, ANGOLA

Practical Information Guide for Delegates

DATES

5 – 7 July 2026

VENUE

InterContinental Luanda Miramar



Table of Contents



- 01** 🏠 Welcome — Cover Page
- 02** ☰ Table of Contents — Guide Navigation
- 03** ⓘ Event Overview — When · Where · Weather
- 04** 📅 Programme — Three-Day Agenda
- 05** ✈️ Travel & Logistics — Direct Routes & Shuttle
- 06** 🗓️ Flight Detail — Airlines & Frequencies
- 07** 🏨 Accommodation — Recommended Hotels
- 09** 🌐 Visa & Entry — 98 Exempt Countries
- 10** 🛡️ Health & Safety — Vaccinations & Emergency
- 11** ⚙️ Practical Info — Currency · Power · Dress
- 12** 📷 Explore — Luanda Tourism Highlights
- 13** 🛍️ Shopping — Premier Retail Centres
- 14** 🎧 Support — Secretariat & Help Desk

EVENT OVERVIEW



VENUE & HOST

InterContinental Luanda Miramar



Avenida Nehru n.2, Miramar, Luanda, Angola.

Hosted by **Fundo Soberano de Angola (FSDEA)**.



EVENT DATES

5 – 7 July 2026

Sunday to Tuesday



JULY WEATHER

22 – 28°C

Dry season (Cacimbo), clear skies



ARRIVAL HUB

LAD / NBJ Airport

50 min from venue via shuttle



OFFICIAL WEBSITE

www.asif2026luanda.com

Online registration open

Three-Day Agenda

All sessions hosted at **InterContinental Luanda Miramar**



DAY 00



Sunday, 5 July

Arrival & Registration



MORNING

Delegate Arrival
Welcome to Luanda



AFTERNOON

Registration



EVENING

Welcome Cocktail
InterContinental Miramar

DAY 01



Monday, 6 July

Opening & Panels



MORNING

Opening Session
High-Level Keynotes



AFTERNOON

Panel Sessions
Deal-Oriented Discussions



EVENING

Gala Dinner
Dialogue & Networking

DAY 02



Tuesday, 7 July

Council & Strategy



MORNING

ASIF Council Meeting
Executive Deliberations



MID-MORNING

New Members Welcome
Formal Induction



AFTERNOON

2027 Host Unveiling
Official Announcement

Travel & Transportation

14 Direct Global Routes

EUROPE & MIDDLE EAST

- Lisbon
- Porto
- Istanbul
- Dubai
- Casablanca (NEW)

AMERICAS & AFRICA

- São Paulo
- Addis Ababa
- Johannesburg
- Cape Town
- Maputo

NEW REGIONAL CONNECTIVITY (2025/6)

Abidjan • Windhoek • Nairobi • Lagos



Airport Arrival

PRIMARY HUB

Dr. António Agostinho Neto Int'l Airport (NBJ/LAD)

COMPLIMENTARY TRANSPORT SUPPORT

Frequency: Every 30 minutes
Operating: 07:00 – 22:00 Daily



 **TRANSFER TIME**
~50 min to Venue

City Travel

Recommended app-based
services for safe and reliable
city travel throughout Luanda.




Download apps via App
Store or Google Play



Flight Routes Detail



ROUTE (FROM/TO LAD)	AIRLINE	FLIGHT	 FREQUENCY	 DURATION	TYPICAL DEP.
Lisbon (LIS)	TAP Air Portugal / TAAG	TP1587 / DT652	Daily	7h35–8h55	12:00 / 22:55
Porto (OPO)	TAP Air Portugal	TP1587	Seasonal (2x/week)	~8h15	13:10
Casablanca (CMN)	Royal Air Maroc	AT289	3x/week	7h05	06:05–07:00
Istanbul (IST)	Turkish Airlines	TK567	3x/week	7h35	18:30
Dubai (DXB)	Emirates	EK794	3x/week	7h50	18:25
São Paulo (GRU)	TAAG	DT747	6x/week	8h30	10:35
Lagos (LOS)	TAAG	DT563	5x/week	3h15	13:40
Addis Ababa (ADD)	Ethiopian Airlines	ET850	Daily	4h45	14:05
Nairobi (NBO)	TAAG	DT570	3x/week	3h50	13:00
Abidjan (ABJ)	TAAG	DT507	3x/week	3h30	Morning/Afternoon
Windhoek (WDH)	TAAG	DT573	4x/week	2h30	10:20
Maputo (MPM)	TAAG	DT581	4x/week	4h05	09:20
Johannesburg (JNB)	TAAG / Airlink	DT577 / 4Z44	Daily	3h45	08:55 / 12:30
Cape Town (CPT)	TAAG	DT579	Daily	4h00	09:00

 Source: FlightAware, FlightRadar24, AeroRoutes (2026). Times and frequencies are subject to seasonal adjustment.

Recommended Accommodation

PART 1: PREMIUM SELECTIONS



PREMIUM



InterContinental Luanda Miramar

📍 At Venue (Event Hub)

💰 Between ~USD 325 – 1.325 / night

KEY AMENITIES

- ✓ 24h Gym & Outdoor Pool
- ✓ 4 Signature Restaurants
- ✓ Lush Gardens & Event Centre



Book by email, mentioning the code [ASIF2026](#) for special rates

reservations.icluanda@ihg.com

PREMIUM



EPIC SANA Luanda Hotel

📍 2 min from venue

💰 Between ~USD 275 – 4.150 / night

KEY AMENITIES

- ✓ Sayanna Wellness Spa
- ✓ Indoor & Outdoor Pools
- ✓ Kimera & Vitróvio Dining



Book directly on the website, with special rates already applied

<https://reservations.travelclick.com/100233?RatePlanId=11231135>

STANDARD



Baia Hotel Luanda

📍 7 min from venue

💰 Between ~USD 270 – 585 / night

KEY AMENITIES

- ✓ Rooftop Infinity Pool
- ✓ Full-Service Spa
- ✓ Bay View Lounge Bar



Book by email, mentioning the code [ASIF2026](#) for special rates

bookings.baia@tdhotels.com

Note: All rates approximate. Book directly with properties.

Recommended Accommodation

SELECT 4-STAR OPTIONS IN LUANDA



Hotel Tropico

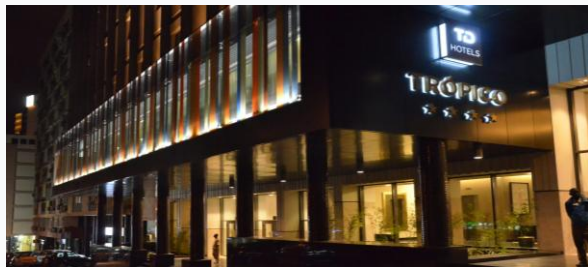


📍 3 min from Venue

💰 Between ~USD 270 – 2.720 / night

AMENITIES

- ✓ Health Club & Gym
- ✓ Outdoor Pool
- ✓ Restaurante Coral
- ✓ Conference Rooms



Book by email, mentioning the code [ASIF2026](#) for special rates

bookings.tropico@tdhotels.com

Hotel Alvalade



📍 9 min from Venue

💰 Between ~USD 255 – 545 / night

AMENITIES

- ✓ Infinity Pool
- ✓ Restaurante Zambeze
- ✓ Business Center



Book by email, mentioning the code [ASIF2026](#) for special rates

bookings.alvalade@tdhotels.com

Skyna Hotel

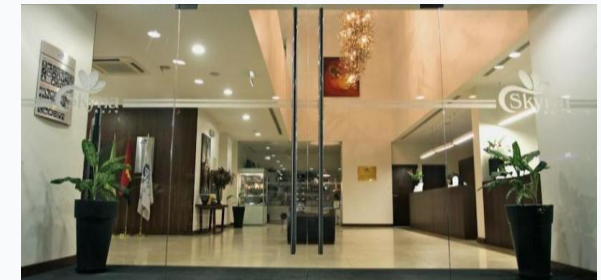


📍 3 min from Venue

💰 Between ~USD 258 – 445 / night

AMENITIES

- ✓ 3 Bars & Lounge
- ✓ Buffet Restaurant
- ✓ Fitness Center
- ✓ Complimentary Wi-Fi



Book by email, mentioning the code [ASIF2026](#) for special rates

Reserva.lad@skynahotels.com

Note: All rates approximate. Book directly with properties.

VISA & ENTRY REQUIREMENTS



VISA-EXEMPT COUNTRIES

98 Countries eligible for 30-day tourist entry (includes EU, USA, China, Brazil, Portugal).

WHERE TO APPLY

SME Visa Portal

smevisa.gov.ao

REQUIRED DOCUMENTS

- ✓ Return/Onward Ticket
- ✓ Hotel Confirmation
- ✓ Invitation Letter

MANDATORY FOR ALL TRAVELLERS



Yellow Fever Vaccination Certificate

Required for entry (travellers aged 9 months and above).



DELEGATE SUPPORT

The FSDEA protocol team can assist with invitation letters and visa facilitation.

 asif2026@fsdea.ao

Health & Safety Guidelines



MANDATORY

Yellow Fever Certificate

Required for all travellers aged **9 months and above**. Must be presented upon entry to Angola.



PREVENTION

Malaria Prophylaxis

Consult your physician about Malaria prophylaxis before travel. Use insect protection/repellents consistently.



SAFETY

Water Consumption

Drink only **sealed bottled water**. Avoid ice in drinks outside official event venues and hotels.



International Insurance

Delegates must carry international health insurance including coverage for **emergency medical evacuation**.



MEDICAL ASSISTANCE
Save numbers before
travel

EMERGENCY CONTACT:

All Services

111

Police & Ambulance

Medical Emergency

Security Services

Practical Information



Time Zone

GMT +1

West Africa Time (WAT)
UTC+1 · No Daylight Saving



Currency

Angolan Kwanza **AOA**

Exchange Rate to 1 USD: **913,116**
Subject to changes.

US Dollars widely accepted at hotels and event venues.



Electricity

220V
VOLTAGE

Type C
PLUG TYPE

Adaptors recommended for UK and US devices.



Language

Portuguese (Official)

English (Business)

English is widely spoken at the hotel and event venue.



Dress Code

FORUM SESSIONS

Business Formal

EVENING EVENTS

Smart Casual

Luanda Tourism Highlights

Cultural Heritage & City Landmarks



SÃO MIGUEL FORTRESS

Built in 1576, this hilltop colonial fort offers panoramic views of Luanda Bay and houses the Armed Forces Museum. It stands as the oldest colonial structure in the city.



Ilha do Cabo (Luanda Island)

7km peninsula with white-sand beaches and historic seafood restaurants.



National Museum of Anthropology

14 rooms showcasing over 6,000 artefacts of Angola's rich ethnic heritage.



Mausoleum of Agostinho Neto

Striking 120m brutalist monument honoring Angola's first president.



Iron Palace (Palácio de Ferro)

Iconic structure from the 1890s attributed to Gustave Eiffel.

FEATURED SHOPPING DESTINATIONS



Luanda's premier malls offer delegates world-class retail, dining, and leisure experiences between forum sessions.

Belas Shopping

🕒 09:00 – 22:00 Daily

🎬 Cinemax & Play Time Park

Angola's first modern mall with Shoprite, Mango, Lacoste.



Shopping Fortaleza

📍 Av. 4 de Fevereiro (Bay Area)

💎 Premium Luxury Retail

5-storey architecture with Swarovski and fine jewellery.



Shopping Avennida

⚡ Talatona (Most Modern)

★ IMAX Cinema & Indoor Karting

Premium destination with Kinda Home and Zap Cinema IMAX.



Experience world-class retail in the heart of Luanda.

🕒 **09:00 – 22:00** Convenient daily opening hours

Contacts & Support



FSDEA Support



EMAIL ADDRESS

asif2026@fsdea.ao



WHATSAPP SUPPORT

+244-927 011 126



On-Site Help Desk



LOCATION

Main Lobby, InterContinental Miramar



OPERATING HOURS

Daily, 08:00 – 18:00



DIRECT HOTLINE

+244 912 345 678



OFFICIAL EVENT WEBSITE

www.asif2026luanda.com

Registration, Program Updates & Resources